

PRAGUE SUBURBS PROJECT: INTRODUCTION

A full list of references
can be found here:



EN

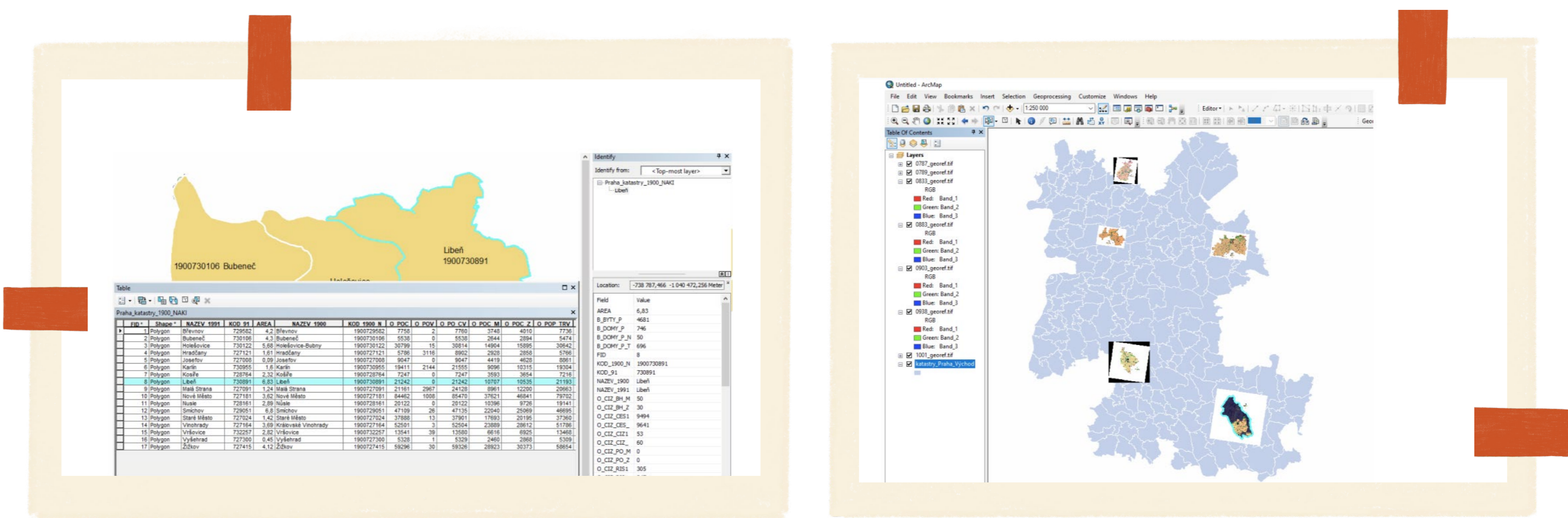
PROJECT OUTCOMES

1 Database

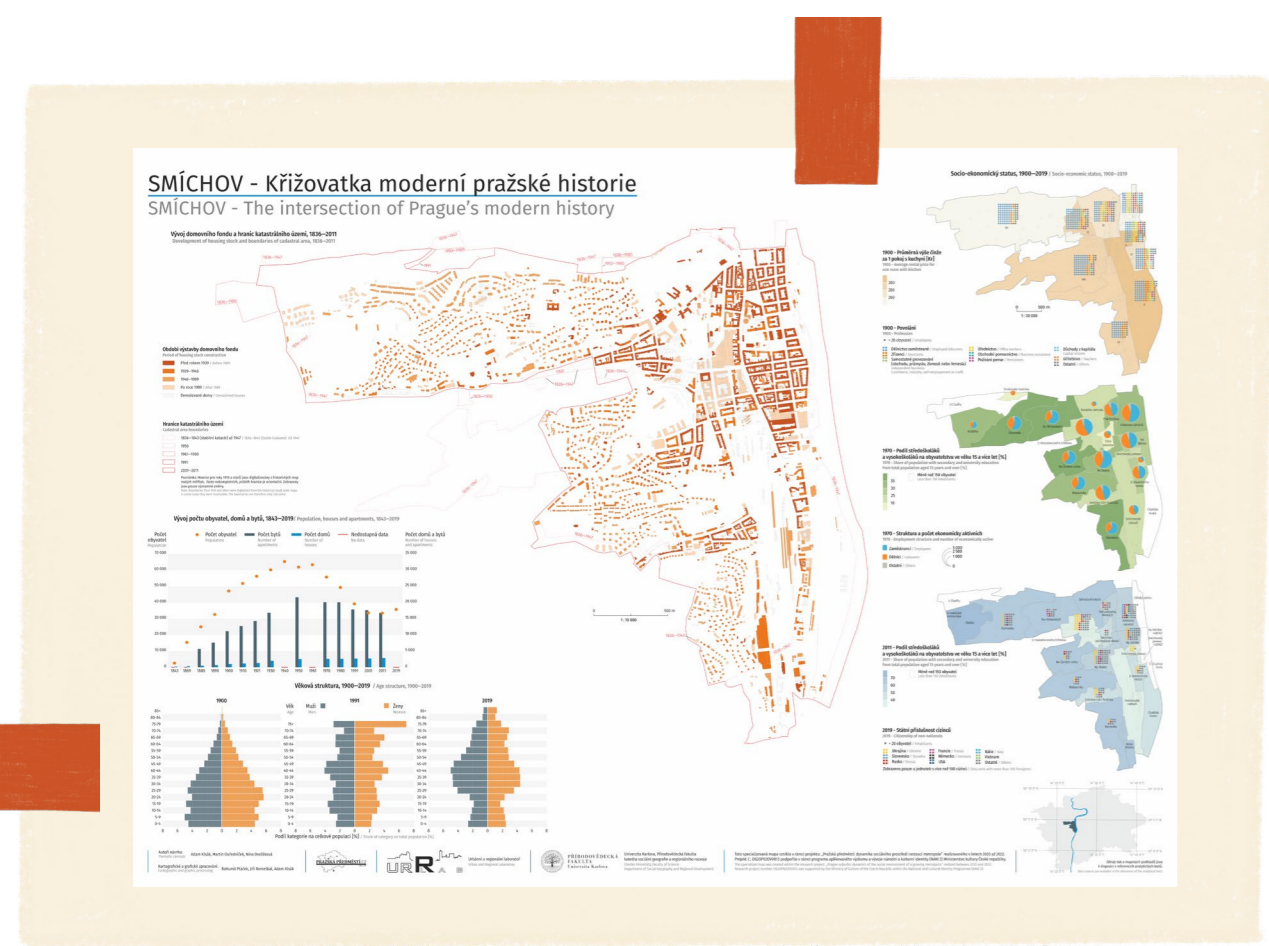
The project aims to describe and explain the changes in the social environment of the peripheral parts of the dynamically growing Prague agglomeration from the period of industrialisation to the present. Therefore, the project has newly digitised historical statistical data, base maps defining Prague's historical boundaries and internal divisions (cadastral territories, census districts). The collected data are gradually being used as a basis for socio-geographical spatial analyses presented in specialised maps and thematic chapters in the forthcoming atlas. The digitised data have been provided to the general public in the form of two **databases of Prague's spatial and population history** which are freely available on the project web portal www.prazskapredmesti.cz.

Database of Prague's spatial history

Database of Prague's population history



QR code with
a link to the
database



QR code for the
specialized
maps



2 Specialized maps

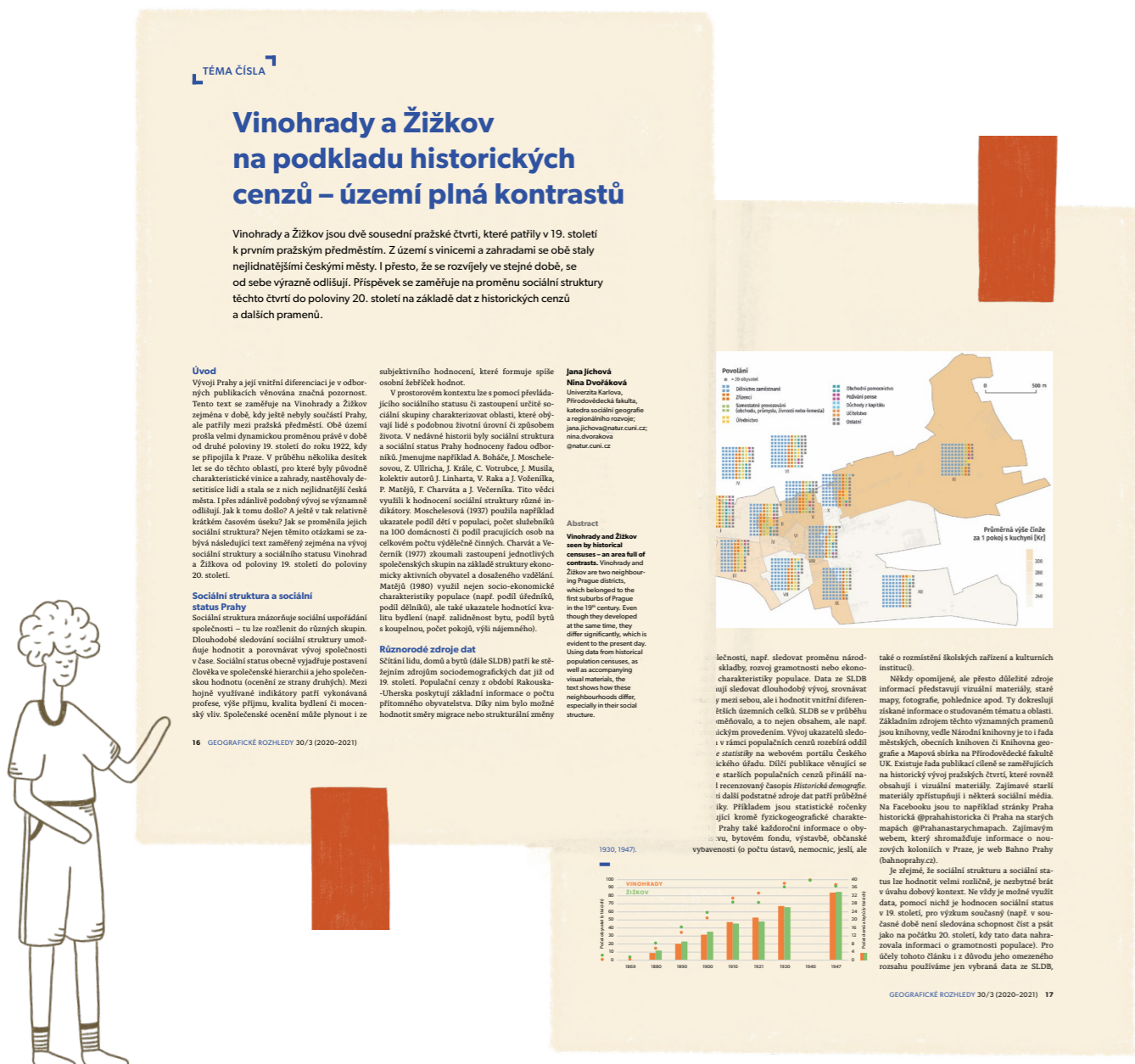
Furthermore, **twenty specialized maps** will depict the transformation of the social environment of selected Prague suburbs over four historical periods of suburban growth. Detailed maps depicting the built environment's gradual development and socio-geographic thematic maps reveal processes that transformed Prague's once rural agricultural villages into its current urban districts. Specialized maps are available on the server www.atlasobyvatelstva.cz.

- The population development of Prague and its suburbs in the 19th century—the growth of the oldest suburbs
- The development of Prague and its suburbs in the first half of the 20th century—residential and industrial suburbs

- The population development of Prague and its suburbs in the socialist period
- The population development of Prague and its suburbs in the transition period

3 Historical Population Atlas of Prague

A wider space for presenting the issues of the spatial and sociodemographic development of Prague and its suburbs is provided by the forthcoming **Historical Population Atlas of Prague**. The atlas covers a number of topics ranging from the spatial expansion of Prague, population distribution, demographic processes, social and economic structure, national and cultural structure, as well as housing and electoral issues. Emphasis is placed on the visualisation of social, demographic and economic processes in the long term and the cartographic presentation of the internal socio-spatial structure of Prague from 1869 to the present.



4 Other outcomes

In addition to this exhibition, published articles and the project's web portal www.prazskapredmesti.cz contribute to spreading awareness of the project's results. The exhibition will be followed by the publication of an accompanying catalogue and presentation of the results at domestic and international conferences.



PŘÍRODOVĚDECKÁ
FAKULTA
Univerzita Karlova



MINISTERSTVO
KULTURY

